

A close-up portrait of a woman with voluminous, curly blonde hair and blue eyes. She is wearing a white, textured knit sweater and has her hands clasped near her neck. She is wearing a ring with a diamond and a blue stone on her left ring finger. The background is a plain, light grey.

HM

Henry Margu

HM

Henry Margu



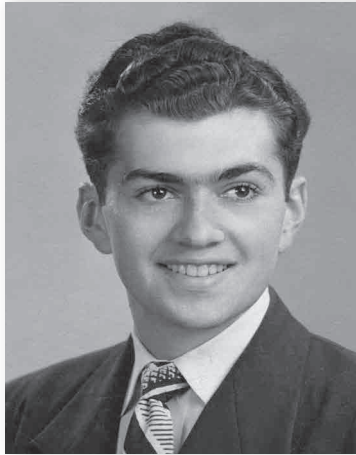
William Margu standing in front of his West Philly millinery shop in 1950. The beginnings of the company he would soon form with his son Henry.

Trend-setting styles, cutting-edge colorations, incomparable quality and relentless dedication to our customers have secured Henry Margu's position as a leader of the "alternative" hair industry.

Since Henry Margu first came on the scene in Philadelphia in 1951, family ownership has developed the company into one of the most well respected international brands of wigs and hair fashions. From a humble beginning in the store front millinery shop of the family house, the perseverance and dedication of the Margu family has made us the oldest and most experienced wig manufacturer in the US. Over these many years, innovative ideas have helped us create some of the most intriguing styles and unique colors in the industry as well as crafting our reputation as a trendsetter. The design staff at Henry Margu has not only focused on developing exquisite fashions but also on achieving the highest quality standards for our products. While Henry Margu continues to grow, our core values and strong family culture have not changed.

Our enduring partnerships with thousands of retailers is the result of our excellent customer service and knowledgeable sales staff which has enabled us to serve countless women over the years.

With 67 years of history, many milestones have been recognized at Henry Margu with many more still to come. Most importantly, the driving force of our efforts is for one purpose ... the satisfaction of our customers!



Henry Margu circa 1951 around the time he was making preparations to launch the business.

In today's world, when a woman's hair looks good, she feels good. Henry Margu is helping women exude beauty and confidence with a countless variety of fashion forward and elegant styles available in a wide range of our exclusive salon inspired colors.

The superior craftsmanship of Henry Margu wigs utilizes sophisticated techniques including specialized fiber processing and blending methods making our styles more manageable and natural looking. Our design team is constantly working to continually create lighter weight wigs with exceptional comfort for endless hours of wearing pleasure.

The beautiful colorations developed by Henry Margu add a touch of realism to any style. Using the most up-to-date coloring trends, the highlighting is designed to accentuate each individual style creating the most natural appearance for every wig.

Henry Margu is creating freedom of choice by enabling every woman to easily achieve any hairstyle and to change her appearance at a moment's notice to look her absolute best.

Browse the following pages and see for yourself why the difference is beautiful™ with Henry Margu wigs.

Henry Margu ... The Difference is Beautiful!™





Marnie

Ref#: 2500

Color shown: 14H

Colors: 1BH, 4GR, 4H, 5H, 6H, 7H, 8H, 8/14H, 8/27/33H, 12AH, 12GR, 12H, 14H, 16H, 24H18, 26GR, 26H, 27AH, 27/26H, 29H, 31H, 33H, 37, 38, 43, 44, 51, 56, 60, 88H, 130H, 131GR, 614GR, 614H, 2500H

Weight: 1.75 ounces

Bang: 4" Eartab: 3½" Nape: 2¾"

Top: 2¾ - 4" Sides: 2½ - 3½" Back: 2½ - 3½"



Chloe

Ref#: 2434

Color shown: 8H

Colors: 1BH, 4GR, 4H, 5H, 6H, 7H, 8H, 8/14H, 8/27/33H, 12AH, 12GR, 12H, 14H, 14/24H, 16H, 18/22H, 24H18, 26GR, 26H, 27AH, 27/26H, 29H, 31H, 33H, 37, 38, 43, 44, 51, 56, 60, 88H, 130H, 131GR, 614GR, 614H, 626H, 2500H

Weight: 2.35 ounces

Bang: 4¾" Eartab: 4" Nape: 5"

Top: 4¾ - 5¼" Sides: 3½ - 5" Back: 3½ - 4"

Overall: 13"





KAYLA



NIKKI



ANNETTE



Kayla
Ref#: 2351
Color shown: 2500H
Weight: 2.95 ounces
Bang: 4" Eartab: 5" Nape: 5"
Top: 4 - 4½" Sides: 4½ - 5½" Back: 4½ - 5½"
Also available in colors: 37, 38, 43, 44, 51, 56, 60, 131H, 626H



Nikki
Ref#: 2393
Color shown: 626H
Weight: 2.25 ounces
Bang: 4½" Eartab: 4½" Nape: 4½"
Top: 3½ - 5½" Sides: 4 - 5" Back: 4 - 5"
Overall: 12½"
Also available in colors: 4GR, 12GR, 26GR, 37, 38, 43, 44, 51, 56, 60, 131GR, 614GR, 626H



Annette
Ref#: 2369
Color shown: 24H18
Weight: 1.95 ounces
Bang: 3½" Eartab: 2½" Nape: 2"
Top: 2½ - 5" Sides: 2½ - 3" Back: 2 - 3½"
Also available in colors: 4GR, 12GR, 26GR, 37, 38H, 43, 44H, 51H, 56, 60H, 131GR, 614GR

COLORS: 1BH, 4H, 5H, 6H, 7H, 8H, 8/14H, 8/27/33H, 12AH, 12H, 14H, 14/24H, 16H, 18/22H, 24H18, 26H, 27AH, 27/26H, 29H, 31H, 33H, 88H, 130H, 614H, 2500H



Elena

Ref#: 2501

Color shown: 8/27/33H

Colors: 1BH, 4H, 5H, 6H, 7H, 8H, 8/14H, 8/27/33H, 12AH, 12H, 14H, 16H, 24H18, 26H, 27AH, 27/26H, 29H, 31H, 33H, 37, 38H, 43, 44H, 51H, 56, 60H, 88H, 130H, 614H, 2500H

Weight: 2.00 ounces

Bang: 4" Eartab: 3½" Nape: 2½"

Top: 2¾ - 4" Sides: 2½ - 4" Back: 2½ - 4"



Felicia

Ref#: 2452

Color shown: 8/14H

Colors: 1BH, 4GR, 4H, 5H, 6H, 7H, 8H, 8/14H, 8/27/33H, 12AH, 12GR, 12H, 14H, 16H, 24H18, 26GR, 26H, 27AH, 27/26H, 29H, 31H, 33H, 88H, 130H, 131GR, 614GR, 614H, 626H, 2500H

Weight: 4.20 ounces

Bang: 5" Eartab: 9" Nape: 7"

Top: 6 - 9" Sides: 8 - 9" Back: 7 - 9"

Overall: 13"





AUDREY



TESS



BAILEY



Audrey
Ref#: 2430
Color shown: 614H
Weight: 2.25 ounces
Bang: 4 ½" Eartab: 3" Nape: 2"
Top: 4 ½ - 6" Sides: 2 - 3" Back: 2 - 5 ½"



Tess
Ref#: 2442
Color shown: 5H
Weight: 2.10 ounces
Bang: 5" Eartab: 3" Nape: 3"
Top: 3 ½ - 4 ¼" Sides: 2 ¼ - 3" Back: 2 ¼ - 3"



Bailey
Ref#: 2439
Color shown: 8/27/33H
Weight: 2.25 ounces
Bang: 4 ¼" Eartab: 3 ½" Nape: 3"
Top: 3 ¾" Sides: 3 - 3 ½" Back: 3 - 3 ½"

COLORS: 1BH, 4GR, 4H, 5H, 6H, 7H, 8H, 8/14H, 8/27/33H, 12AH, 12GR, 12H, 14H, 14/24H, 16H, 18/22H, 24H18, 26GR, 26H, 27AH, 27/26H, 29H, 31H, 33H, 37, 38H, 43, 44H, 51H, 56, 60H, 88H, 130H, 131GR, 614GR, 614H, 2500H



Paige

Ref#: 2482

Color shown: 6H

Colors: 1BH, 4GR, 4H, 5H, 6H, 7H, 8H, 8/14H, 8/27/33H, 12AH, 12GR, 12H, 14H, 16H, 24H18, 26GR, 26H, 27AH, 27/26H, 29H, 31H, 33H, 88H, 130H, 131GR, 614GR, 614H, 626H, 2500H

Weight: 3.30 ounces

Bang: 3½" Eartab: 7½" Nape: 5"

Top: 3½ - 7½" Sides: 6½ - 7½" Back: 5 - 7½"

Overall: 11"



Ella

Ref#: 2453

Color shown: 8/27/33H

Colors: 1BH, 4GR, 4H, 5H, 6H, 7H, 8H, 8/14H, 8/27/33H, 12AH, 12GR, 12H, 14H, 16H, 24H18, 26GR, 26H, 27AH, 27/26H, 29H, 31H, 33H, 88H, 130H, 131GR, 614GR, 614H, 626H, 2500H

Weight: 2.90 ounces

Bang: 4" Eartab: 5½" Nape: 3"

Top: 4 - 7" Sides: 5½" Back: 4 - 5½"

Overall: 9½"





Emily

Ref#: 2503

Color shown: 37

Colors: 1BH, 4H, 5H, 6H, 7H, 8H, 8/14H, 8/27/33H, 12AH, 12H, 14H, 14/24H, 16H, 18/22H, 24H18, 26H, 27AH, 27/26H, 29H, 31H, 33H, 37, 38H, 43, 44H, 51H, 56, 60H, 88H, 130H, 614H

Weight: 1.75 ounces

Bang: 3½" Eartab: 3" Nape: 2"

Top: 2 - 3½" Sides: 2 - 3" Back: 2 - 3"



Holly

Ref#: 2445

Color shown: 14H

Colors: 1BH, 4GR, 4H, 5H, 6H, 7H, 8H, 8/14H, 8/27/33H, 12AH, 12GR, 12H, 14H, 16H, 24H18, 26GR, 26H, 27AH, 27/26H, 29H, 31H, 33H, 37, 38, 43, 44, 51, 56, 60, 88H, 130H, 131GR, 614GR, 614H, 626H, 2500H

Weight: 2.75 ounces

Bang: 5½" Eartab: 5" Nape: 2"

Top: 8" Sides: 5½" Back: 5"

Overall: 9½"





Danielle

Ref#: 2409

Color shown: 626H

Colors: 1BH, 4H, 5H, 6H, 7H, 8H, 8/14H, 8/27/33H, 12AH, 12H, 14H, 14/24H, 16H, 18/22H, 24H18, 26H, 27AH, 27/26H, 29H, 31H, 33H, 88H, 130H, 131H, 614H, 626H, 2500H

Weight: 3.25 ounces

Bang: 4½" Eartab: 7" Nape: 7"

Top: 3½ - 6¼" Sides: 6¼ - 7¾" Back: 5½ - 7¾"

Overall: 14½"



Gabby

Ref#: 2450

Color shown: 29H

Colors: 1BH, 4GR, 4H, 5H, 6H, 7H, 8H, 8/14H, 8/27/33H, 12AH, 12GR, 12H, 14H, 16H, 24H18, 26GR, 26H, 27AH, 27/26H, 29H, 31H, 33H, 88H, 130H, 131GR, 614GR, 614H, 626H, 2500H

Weight: 2.30 ounces

Bang: 4½" Eartab: 4½" Nape: 3½"

Top: 4 - 5¾" Sides: 3½ - 4½" Back: 3½ - 4½"





LUCY



AMELIA



CAROLINE



Lucy
Ref#: 2505
Color shown: 12H
Weight: 2.00 ounces
Bang: 3¼" Eartab: 2½" Nape: 1¼"
Top: 2¾ - 3¼" Sides: 2¼ - 2¾" Back: 2¼ - 2¾"
Also available in colors: 614H & 2500H



Amelia
Ref#: 2507
Color shown: 26H
Weight: 1.80 ounces
Bang: 3¾" Eartab: 3¼" Nape: 2¾"
Top: 3¾" Sides: 3¼ - 3¾" Back: 3¼ - 3¾"
Also available in color: 2500H



Caroline
Ref#: 2504
Color shown: 7H
Weight: 1.75 ounces
Bang: 3½" Eartab: 3¼" Nape: 2¼"
Top: 2½ - 3¼" Sides: 2¼ - 3¼" Back: 2½ - 3¼"
Also available in colors: 14/24H & 18/22H

COLORS: 1BH, 4H, 5H, 6H, 7H, 8H, 8/14H, 8/27/33H, 12AH, 12H, 14H, 16H, 24H18, 26H, 27AH, 27/26H, 29H, 31H, 33H, 37, 38, 43, 44, 51, 56, 60, 88H, 130H



Amber

Ref#: 2461

Color shown: 7H

Colors: 1BH, 4GR, 4H, 5H, 6H, 7H, 8H, 8/14H, 8/27/33H, 12AH, 12GR, 12H, 14H, 16H, 24H18, 26GR, 26H, 27AH, 27/26H, 29H, 31H, 33H, 37, 38, 43, 44, 51, 56, 60, 88H, 130H, 131GR, 614GR, 614H, 2500H

Weight: 2.00 ounces

Bang: 2½" Eartab: 3" Nape: 2"

Top: 2 - 4" Sides: 2 - 3" Back: 2 - 3"



Jayde

Ref#: 2455

Color shown: 614GR

Colors: 1BH, 4GR, 4H, 5H, 6H, 7H, 8H, 8/14H, 8/27/33H, 12AH, 12GR, 12H, 14H, 16H, 24H18, 26GR, 26H, 27AH, 27/26H, 29H, 31H, 33H, 88H, 130H, 131GR, 614GR, 614H, 626H, 2500H

Weight: 3.40 ounces

Bang: 4½" Eartab: 6½" Nape: 3"

Top: 9½" Sides: 6 - 8" Back: 2¾ - 8"

Overall: 10½"





SAVANNAH



DELILAH



VANITY



Savannah

Ref#: 2437

Color shown: 27/26H

Weight: 4.00 ounces

Bang: 6" Eartab: 11" Nape: 10"

Top: 5 - 10½" Sides: 9 - 11" Back: 9½ - 11"

Overall: 16"

Also available in colors: 4GR, 5H, 7H, 8/14H, 8/27/33H, 12GR, 14/24H, 18/22H, 26GR, 27/26H, 29H, 31H, 131GR, 614GR, 626H



Delilah

Ref#: 2717

Color shown: 24H18

Weight: 7.90 ounces

Bang: 5½" Eartab: 18" Nape: 18"

Top: 5½ - 16" Sides: 12 - 18" Back: 16 - 18"

Overall: 26"

Also available in colors: 1H, 131H, & 2400H



Vanity

Ref#: 2709

Color shown: 2400H

Weight: 6.35 ounces

Bang: 5" Eartab: 16" Nape: 18"

Top: 5½ - 14" Sides: 16" Back: 16 - 18"

Overall: 26"

Also available in colors: 1H, 131H, & 2400H

COLORS: 1BH, 4H, 6H, 8H, 12AH, 12H, 14H, 16H, 24H18, 26H, 27AH, 33H, 88H, 130H, 614H, 2500H



Bethany

Ref#: 2444

Color shown: 26GR

Colors: 1BH, 4GR, 4H, 5H, 6H, 7H, 8H, 8/14H, 8/27/33H, 12AH, 12GR, 12H, 14H, 16H, 24H18, 26GR, 26H, 27AH, 27/26H, 29H, 31H, 33H, 88H, 130H, 131GR, 614GR, 614H, 626H, 2500H

Weight: 4.05 ounces

Bang: 5" Eartab: 11" Nape: 11½"

Top: 11" Sides: 11" Back: 11"

Overall: 18"



Brenda

Ref#: 2426

Color shown: 24H18

Colors: 1BH, 4GR, 4H, 5H, 6H, 7H, 8H, 8/14H, 8/27/33H, 12AH, 12GR, 12H, 14H, 14/24H, 16H, 18/22H, 24H18, 26GR, 26H, 27AH, 27/26H, 29H, 31H, 33H, 37, 38H, 43, 44H, 51H, 56, 60H, 88H, 130H, 131GR, 614GR, 614H, 2500H

Weight: 2.00 ounces

Bang: 4½" Eartab: 5" Nape: 3½"

Top: 4 - 6" Sides: 3½ - 5" Back: 3½ - 5"

Overall: 11½"

Petite headsize





LEAH



PIPER



RUBY



Leah
 Ref#: 2414
 Color shown: 88H
 Weight: 1.75 ounces
 Bang: 3¾" Eartab: 3¼" Nape: 2¼"
 Top: 2¾ - 3¾" Sides: 2¼ - 3¼" Back: 2¼ - 3¼"
 Petite headsize
 Also available in colors: 14/24H, 18/22H, 37, 38, 43, 44, 51, 56, 60, 131H



Piper
 Ref#: 2502
 Color shown: 14H
 Weight: 1.55 ounces
 Bang: 2¼" Eartab: 2¼" Nape: 1¾"
 Top: 2¼" Sides: 1¾ - 2½" Back: 1¾ - 2¼"
 Petite headsize
 Also available in colors: 37, 38, 43, 44, 51, 56, 60, 131H



Ruby
 Ref#: 2467
 Color shown: 26H
 Weight: 1.90 ounces
 Bang: 3" Eartab: 2½" Nape: 2¼"
 Top: 2 - 3" Sides: 2¼ - 2½" Back: 2¼ - 2½"
 Petite Average headsize
 Also available in colors: 4GR, 12GR, 26GR, 37, 38H, 43, 44H, 51H, 56, 60H, 131GR, 614GR

COLORS: 1BH, 4H, 5H, 6H, 7H, 8H, 8/14H, 8/27/33H, 12AH, 12H, 14H, 16H, 24H18, 26H, 27AH, 27/26H, 29H, 31H, 33H, 88H, 130H, 614H, 2500H



Bonnie

Ref#: 2458

Color shown: 6H

Colors: 1BH, 4GR, 4H, 5H, 6H, 7H, 8H, 8/14H, 8/27/33H, 12AH, 12GR, 12H, 14H, 16H, 24H18, 26GR, 26H, 27AH, 27/26H, 29H, 31H, 33H, 37, 38, 43, 44, 51, 56, 60, 88H, 130H, 131GR, 614GR, 614H, 2500H

Weight: 1.65 ounces

Bang: 3½" Eartab: 2½" Nape: 2"

Top: 2 - 3½" Sides: 2 - 2½" Back: 2 - 2½"

Petite Average headsize

Lace front



Jules

Ref#: 2481

Color shown: 26H

Colors: 1BH, 4GR, 4H, 5H, 6H, 7H, 8H, 8/14H, 8/27/33H, 12AH, 12GR, 12H, 14H, 16H, 24H18, 26GR, 26H, 27AH, 27/26H, 29H, 31H, 33H, 88H, 130H, 131GR, 614GR, 614H, 626H, 2500H

Weight: 2.75 ounces

Bang: 7" Eartab: 5½" Nape: 4½"

Top: 3¼ - 7½" Sides: 3¼ - 6½" Back: 4½ - 6½"

Overall: 10"

Lace front





PAULINA



TIFFANY



DYLAN



Paulina
Ref#: 2468
Color shown: 33H
Weight: 4.15 ounces
Bang: 11" Eartab: 10" Nape: 10"
Top: 9 -13" Sides: 10¾ - 11½" Back: 10 - 11½"
Overall: 13¼"
Lace front
Also available in colors: 131H & 626H



Tiffany
Ref#: 2473
Color shown: 8H
Weight: 3.75 ounces
Bang: 7" Eartab: 9" Nape: 6½"
Top: 4 - 10½" Sides: 7½ - 9" Back: 6½ - 9"
Overall: 13"
Lace front
Also available in colors: 4GR, 12GR, 26GR, 131GR, 614GR, 626H



Dylan
Ref#: 2475
Color shown: 24H18
Weight: 2.15 ounces
Bang: 4 - 6" Eartab: 2¼" Nape: 1¾"
Top: 2¼ - 6" Sides: 1¾ - 3¼" Back: 1½ - 3¼"
Lace front
Also available in colors: 4GR, 12GR, 26GR, 37, 38H, 43, 44H, 51H, 56, 60H, 131GR, 614GR

COLORS: 1BH, 4H, 5H, 6H, 7H, 8H, 8/14H, 8/27/33H, 12AH, 12H, 14H, 16H, 24H18, 26H, 27AH, 27/26H, 29H, 31H, 33H, 88H, 130H, 614H, 2500H



Harper

Ref#: 2472

Color shown: 14H

Colors: 1BH, 4GR, 4H, 5H, 6H, 7H, 8H, 8/14H, 8/27/33H, 12AH, 12GR, 12H, 14H, 16H, 24H18, 26GR, 26H, 27AH, 27/26H, 29H, 31H, 33H, 88H, 130H, 131GR, 614GR, 614H, 626H, 2500H

Weight: 4.70 ounces

Bang: 6½" Eartab: 13½" Nape: 12"

Top: 8½ - 12" Sides: 5 - 13½" Back: 5 - 13½"

Overall: 18"

Lace front



Isabelle

Ref#: 4000

Color shown: 27/26H

Colors: 1BH, 4H, 5H, 6H, 7H, 8H, 8/14H, 8/27/33H, 12AH, 12H, 14H, 16H, 24H18, 26H, 27AH, 27/26H, 29H, 31H, 33H, 37, 38, 43, 44, 51, 56, 60, 88H, 130H, 131H, 614H, 626H, 2500H

Weight: 4.05 ounces

Bang: 12½" Eartab: 9" Nape: 5½"

Top: 3 - 14" Sides: 8 - 12" Back: 5½ - 12"

Overall: 15"

Lace front





Faith

Ref#: 2441

Color shown: 8/27/33H

Colors: 1BH, 4GR, 4H, 5H, 6H, 7H, 8H, 8/14H, 8/27/33H, 12AH, 12GR, 12H, 14H, 14/24, 16H, 18/22, 24H18, 26GR, 26H, 27AH, 27/26H, 29H, 31H, 33H, 37, 38, 43, 44, 51, 56, 60, 88H, 130H, 131GR, 614GR, 614H, 2500H

Weight: 1.65 ounces

Bang: 3" Eartab: 2½" Nape: 2¼"

Top: 1¾ - 3½" Sides: 2½" Back: 1¾ - 3½"

Petite headsize

Monofilament crown area



Celine

Ref#: 2457

Color shown: 131H

Colors: 1BH, 4H, 5H, 6H, 7H, 8H, 8/14H, 8/27/33H, 12AH, 12H, 14H, 16H, 24H18, 26H, 27AH, 27/26H, 29H, 31H, 33H, 88H, 130H, 131H, 614H, 626H, 2500H

Weight: 5.40 ounces

Bang: 3" Eartab: 15" Nape: 13"

Top: 12 - 17" Sides: 15 - 17" Back: 13 - 17"

Overall: 19"

Monofilament crown area





Brooklyn

Ref#: 2480
Color shown: 31H
Colors: 1BH, 4GR, 4H, 5H, 6H, 7H, 8H, 8/14H, 8/27/33H, 12AH, 12GR, 12H, 14H, 16H, 24H18, 26GR, 26H , 27AH, 27/26H, 29H, 31H, 33H, 88H, 130H, 131GR, 614GR, 614H, 2500H
Weight: 3.25 ounces
Bang: 8" Eartab: 8" Nape: 4½"
Top: 12" Sides: 10" Back: 9½"
Overall: 12"
Petite Average headsize
Monofilament part with lace front



Presley

Ref#: 2478
Color shown: 26H
Colors: 1BH, 4GR, 4H, 5H, 6H, 7H, 8H, 8/14H, 8/27/33H, 12AH, 12GR, 12H, 14H, 16H, 24H18, 26GR, 26H , 27AH, 27/26H, 29H, 31H, 33H, 88H, 130H, 131GR, 614GR, 614H, 626H, 2500H
Weight: 4.80 ounces
Bang: 10¼" Eartab: 10¾" Nape: 11¾"
Top: 9 - 13" Sides: 9 - 12" Back: 9 - 12"
Overall: 18½"
Monofilament part with lace front





Naturally Yours®

Experience the best Henry Margu has to offer! It's a new era for today's sophisticated fashion forward women looking for quality, comfort and style. With advancements in production techniques that have allowed for countless improvements in every detail, Henry Margu has created a unique collection of wigs for every lifestyle.

Introducing **Naturally Yours®** ... innovative and artistically hand crafted styles offering exceptional comfort while looking amazingly realistic. Modern in design, the **Naturally Yours** collection offers ready-to-wear styles with a monofilament top that have the versatility to be customized to fit a woman's personal needs. From chic bobs to long, luscious layers, the monofilament top is hand-knotted with individual fibers to simulate realistic hair growth and allowing for multi-directional styling.

For the most discerning consumers that desire only the best, **Naturally Yours Professional** offer a meticulously hand-knotted stretch lace cap with a monofilament top that are uniquely designed to allow for endless hours of wearing pleasure making this collection the most exclusive in the market today.

Browse the following pages to see the variety of luxurious **Naturally Yours** styles that will help every woman radiate beauty and look and feel her best!

For the most natural appearance and the ultimate in comfort ... it's **Naturally Yours®**.



Sabrina

Ref#: 4731

Color shown: 131GR

Colors: 1BH, 4GR, 4H, 5H, 6H, 7H, 8H, 8/14H, 8/27/33H, 12AH, 12GR, 12H, 14H, 16H, 24H18, 26GR, 26H, 27AH, 27/26H, 29H, 31H, 33H, 37, 38H, 43, 44H, 51H, 56, 60H, 88H, 130H, 131GR, 614GR, 614H, 2500H

Weight: 1.80 ounces

Bang: 3½" Eartab: 4" Nape: 2½"

Top: 2¾ - 4¾" Sides: 2½ - 4" Back: 2½ - 4"

Petite headsize

Monofilament top



Stella

Ref#: 4800

Color shown: 12H

Colors: 1BH, 4GR, 4H, 5H, 6H, 7H, 8H, 8/14H, 8/27/33H, 12AH, 12GR, 12H, 14H, 16H, 24H18, 26GR, 26H, 27AH, 27/26H, 29H, 31H, 33H, 37, 38, 43, 44, 51, 56, 60, 88H, 130H, 131GR, 614GR, 614H, 2500H

Weight: 2.05 ounces

Bang: 4" Eartab: 3½" Nape: 2¾"

Top: 4" Sides: 2½ - 3½" Back: 2½ - 3½"

Monofilament top





BECKY



KELLY



QUINN



Becky

Ref#: 4739
Color shown: 88H

Weight: 1.80 ounces
Bang: 4" Eartab: 2¾" Nape: 1¾"
Top: 2 - 3½" Sides: 1¾ - 2¾" Back: 1¾ - 3¼"

Monofilament top

Also available in colors: 4GR, 12GR, 26GR, 37, 38H, 43, 44H, 51H, 56, 60H, 131GR, 614GR



Kelly

Ref#: 4745
Color shown: 27/26H

Weight: 2.20 ounces
Bang: 4" Eartab: 6½" Nape: 1½"
Top: 3 - 8" Sides: 4 - 6½" Back: 1½ - 6½"
Overall: 8"

Petite Average headsize
Monofilament top

Also available in colors: 4GR, 12GR, 26GR, 37, 38H, 43, 44H, 51H, 56, 60H, 131GR, 614GR, 626H



Quinn

Ref#: 4801
Color shown: 31H

Weight: 1.80 ounces
Bang: 3¾" Eartab: 3¼" Nape: 2"
Top: 3¼ - 3¾" Sides: 2 - 3¼" Back: 2 - 3¼"

Monofilament top

Also available in colors: 37, 38, 43, 44, 51, 56, 60

COLORS: 1BH, 4H, 5H, 6H, 7H, 8H, 8/14H, 8/27/33H, 12AH, 12H, 14H, 16H, 24H18, 26H, 27AH, 27/26H, 29H, 31H, 33H, 88H, 130H, 614H, 2500H



Rachel

Ref#: 4769

Color shown: 26GR

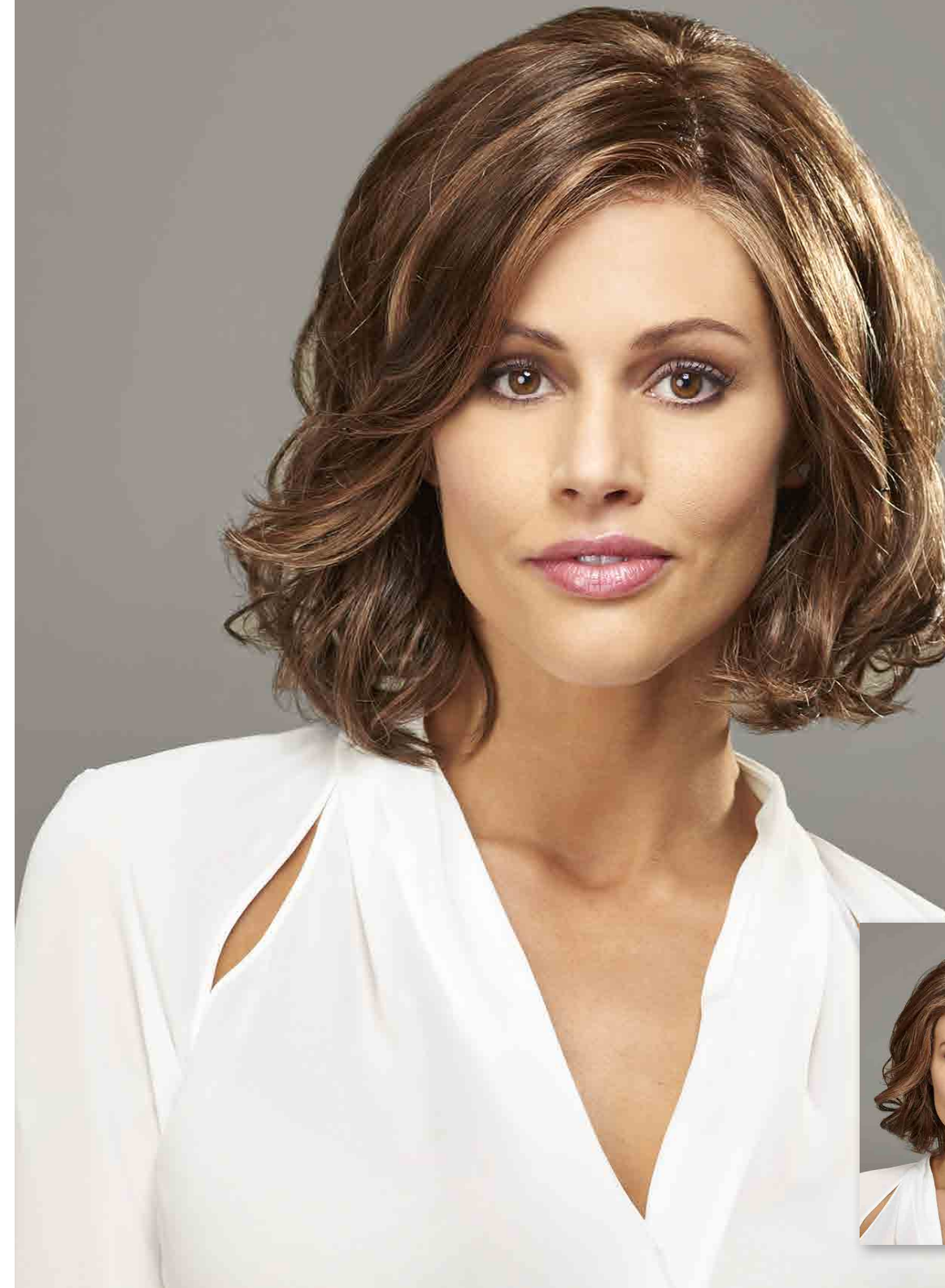
Colors: 1BH, 4GR, 4H, 5H, 6H, 7H, 8H, 8/14H, 8/27/33H, 12AH, 12GR, 12H, 14H, 16H, 24H18, 26GR, 26H, 27AH, 27/26H, 29H, 31H, 33H, 37, 38, 43, 44, 51, 56, 60, 88H, 130H, 131GR, 614GR, 614H, 2500H

Weight: 2.35 ounces

Bang: 6¼" Eartab: 4" Nape: 2¼"

Top: 2¾ - 6½" Sides: 3 - 5" Back: 2½ - 5"

Monofilament top with lace front



Hayden

Ref#: 4763

Color shown: 8/14H

Colors: 1BH, 4GR, 4H, 5H, 6H, 7H, 8H, 8/14H, 8/27/33H, 12AH, 12GR, 12H, 14H, 16H, 24H18, 26GR, 26H, 27AH, 27/26H, 29H, 31H, 33H, 88H, 130H, 131GR, 614GR, 614H, 626H, 2500H

Weight: 3.50 ounces

Bang: 7" Eartab: 9" Nape: 4"

Top: 5 - 10" Sides: 6 - 9" Back: 4 - 9"

Overall: 11½"

Monofilament top with lace front





CHARLOTTE



MONICA



ZOEY



Charlotte
Ref#: 4750
Color shown: 4H
Weight: 1.95 ounces
Bang: 3½" Eartab: 3" Nape: 3"
Top: 2½ - 4" Sides: 2¼ - 3" Back: 2¼ - 3"
Monofilament top with lace front
Also available in colors: 37, 38, 43, 44, 51, 56, 60



Monica
Ref#: 4751
Color shown: 26GR
Weight: 1.80 ounces
Bang: 2¾" Eartab: 2¼" Nape: 1¾"
Top: 2 - 3¼" Sides: 2¼ - 2¾" Back: 1¾ - 2¾"
Petite Average headsize
Monofilament top with lace front
Also available in colors: 37, 38, 43, 44, 51, 56, 60



Zoey
Ref#: 4767
Color shown: 7H
Weight: 2.25 ounces
Bang: 4¼" Eartab: 4¾" Nape: 3½"
Top: 4 - 6" Sides: 4 - 5" Back: 3½ - 4"
Overall: 10¼"
Monofilament top with lace front
Also available in colors: 37, 38H, 43, 44H, 51H, 56, 60H

COLORS: 1BH, 4GR, 4H, 5H, 6H, 7H, 8H, 8/14H, 8/27/33H, 12AH, 12GR, 12H, 14H, 16H, 24H18, 26GR, 26H, 27AH, 27/26H, 29H, 31H, 33H, 88H, 130H, 131GR, 614GR, 614H, 2500H



Scarlet

Ref#: 4770

Color shown: 14H

Colors: 1BH, 4GR, 4H, 5H, 6H, 7H, 8H, 8/14H, 8/27/33H, 12AH, 12GR, 12H, 14H, 16H, 24H18, 26GR, 26H, 27AH, 27/26H, 29H, 31H, 33H, 88H, 130H, 131GR, 614GR, 614H, 2500H

Weight: 4.30 ounces

Bang: 7" Eartab: 8½" Nape: 8½"

Top: 11" Sides: 11" Back: 11"

Overall: 15"

Monofilament top with lace front



Peyton

Ref#: 4761

Color shown: 31H

Colors: 1BH, 4GR, 4H, 5H, 6H, 7H, 8H, 8/14H, 8/27/33H, 12AH, 12GR, 12H, 14H, 16H, 24H18, 26GR, 26H, 27AH, 27/26H, 29H, 31H, 33H, 88H, 130H, 131GR, 614GR, 614H, 626H, 2500H

Weight: 3.00 ounces

Bang: 7" Eartab: 7" Nape: 4"

Top: 5 - 8½" Sides: 4 - 7" Back: 4 - 7"

Overall: 10½"

Monofilament top with lace front





FIONA



GRACE



GIANNA



Fiona
Ref#: 4749
Color shown: 7H
Weight: 3.30 ounces
Bang: 7" Eartab: 8½" Nape: 6"
Top: 5 ¼ - 9" Sides: 7½ - 8½" Back: 6 - 8 ½"
Overall: 13"
Monofilament top with lace front
Also available in color: 626H



Grace
Ref#: 4753
Color shown: 51H
Weight: 1.75 ounces
Bang: 2 - 3" Eartab: 2½" Nape: 2¼"
Top: 2 - 3" Sides: 2¼ - 2½" Back: 2¼ - 2½"
Petite Average headsize
Monofilament top with lace front
Also available in colors: 37, 38H, 43, 44H, 51H, 56, 60H



Gianna
Ref#: 4766
Color shown: 14H
Weight: 2.40 ounces
Bang: 4" Eartab: 4¼" Nape: 4½"
Top: 3½ - 5½" Sides: 4 - 4½" Back: 4½ - 5"
Overall: 10"
Monofilament top with lace front
Also available in colors: 37, 38, 43, 44, 51, 56, 60

COLORS: 1BH, 4GR, 4H, 5H, 6H, 7H, 8H, 8/14H, 8/27/33H, 12AH, 12GR, 12H, 14H, 16H, 24H18, 26GR, 26H, 27AH, 27/26H, 29H, 31H, 33H, 88H, 130H, 131GR, 614GR, 614H, 2500H



Kendall

Ref#: 4758

Color shown: 7H

Colors: 1BH, 4GR, 4H, 5H, 6H, 7H, 8H, 8/14H, 8/27/33H, 12AH, 12GR, 12H, 14H, 16H, 24H18, 26GR, 26H, 27AH, 27/26H, 29H, 31H, 33H, 88H, 130H, 131GR, 614GR, 614H, 626H, 2500H

Weight: 3.55 ounces

Bang: 7" Eartab: 10" Nape: 8"

Top: 7 -11" Sides: 8 - 10" Back: 8 - 10"

Overall: 14½"

Monofilament top with lace front



Farrah

Ref#: 4756

Color shown: 27AH

Colors: 1BH, 4GR, 4H, 5H, 6H, 7H, 8H, 8/14H, 8/27/33H, 12AH, 12GR, 12H, 14H, 16H, 24H18, 26GR, 26H, 27AH, 27/26H, 29H, 31H, 33H, 37, 38, 43, 44, 51, 56, 60, 88H, 130H, 131GR, 614GR, 614H, 626H, 2500H

Weight: 2.35 ounces

Bang: 5½" Eartab: 6½" Nape: 2½"

Top: 3½ - 6 ½" Sides: 4½ - 6½" Back: 2½ - 6½"

Overall: 9"

Monofilament top with lace front



Athena

Ref#: 4754

Color shown: 31H & 51H

Colors: 1BH, 4GR, 4H, 5H, 6H, 7H, 8H, 8/14H, 8/27/33H, 12AH, 12GR, 12H, 14H, 16H, 24H18, 26GR, 26H, 27AH, 27/26H, 29H, 31H, 33H, 38, 44, 51, 56, 60, 88H, 130H, 131GR, 614GR, 614H, 626H, 2500H

Weight: 3.75 ounces

Bang: 6" Eartab: 9" Nape: 9"

Top: 6 - 12½" Sides: 7 - 13" Back: 9 - 13"

Overall: 15"

Monofilament top with lace front



Ava

Ref#: 4742

Color shown: 5H

Colors: 1BH, 4H, 5H, 6H, 7H, 8H, 8/14H, 8/27/33H, 12AH, 12H, 14H, 16H, 24H18, 26H, 27AH, 27/26H, 29H, 31H, 33H, 88H, 130H, 131H, 614H, 626H, 2500H

Weight: 5.65 ounces

Bang: 11½" Eartab: 11½" Nape: 15½"

Top: 11¼ - 11¾" Sides: 11½ - 14½" Back: 12½ - 15½"

Overall: 20"

Monofilament top with full lace front





Skylar

Ref#: 4519

Color shown: 8/27/33H

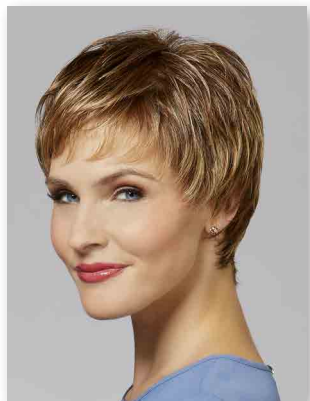
Colors: 1BH, 4H, 5H, 6H, 7H, 8H, 8/14H, 8/27/33H, 12AH, 12H, 14H, 16H, 24H18, 26H, 27AH, 27/26H, 29H, 31H, 33H, 37, 38, 43, 44, 51, 56, 60, 88H, 130H, 2500H

Weight: 1.70 ounces

Bang: 2½" Eartab: 2½" Nape: 2"

Top: 2¼ - 3¾" Sides: 2¼ - 3¼" Back: 1¾ - 3¾"

Monofilament top with lace front



Ashley

Ref#: 4518

Color shown: 26GR

Colors: 1BH, 4GR, 4H, 5H, 6H, 7H, 8H, 8/14H, 8/27/33H, 12AH, 12GR, 12H, 14H, 16H, 24H18, 26GR, 26H, 27AH, 27/26H, 29H, 31H, 33H, 37, 38, 43, 44, 51, 56, 60, 88H, 130H, 131GR, 614GR, 614H, 2500H

Weight: 2.20 ounces

Bang: 5" Eartab: 3¼" Nape: 2½"

Top: 2½ - 5" Sides: 2½ - 4¾" Back: 2½ - 4¾"

Overall: 10"

Monofilament top with lace front





NORA



LORI



TRISH



Nora

Ref#: 4515
Color shown: 8/27/33H
Weight: 3.15 ounces
Bang: 10 - 10¼" Eartab: 6½" Nape: 2½"
Top: 6½ - 9¼" Sides: 6½ - 8¼" Back: 8 - 8¼"
Overall: 11¾"
100% hand-knotted stretch cap with monofilament top with lace front
Medical application on eartabs
Also available in color: 626H



Lori

Ref#: 4514
Color shown: 33H
Weight: 1.65 ounces
Bang: 2½" Eartab: 2½" Nape: 2¼"
Top: 2½ - 3" Sides: 2¼ - 2¾" Back: 2¼ - 2¾"
Petite Average headsize
Monofilament top with lace front
Also available in color: 131H



Trish

Ref#: 4513
Color shown: 5H
Weight: 1.75 ounces
Bang: 3" Eartab: 2½" Nape: 2½"
Top: 2½ - 3" Sides: 2½ - 3" Back: 2½ - 3"
Petite Average headsize
Monofilament top with lace front
Also available in color: 131H

COLORS: 1BH, 4H, 5H, 6H, 7H, 8H, 8/14H, 8/27/33H, 12AH, 12H, 14H, 16H, 24H18, 26H, 27AH, 27/26H, 29H, 31H, 33H, 37, 38, 43, 44, 51, 56, 60, 88H, 130H, 614H, 2500H



Violet

Ref#: 4516

Color shown: 8/27/33H

Colors: 1BH, 4H, 5H, 6H, 7H, 8H, 8/14H, 8/27/33H, 12AH, 12H, 14H, 16H, 24H18, 26H, 27AH, 27/26H, 29H, 31H, 33H, 88H, 130H, 614H, 626H, 2500H

Weight: 6.15 ounces

Bang: 13 - 15" Eartab: 15 - 17" Nape: 15"

Top: 15 - 17" Sides: 15 - 17" Back: 15 - 17"

Overall: 24"

100% hand-knotted stretch cap with monofilament top with lace front. Medical application on eartabs.



Visage

Ref#: 4512

Color shown: 626H

Colors: 1BH, 4H, 5H, 6H, 7H, 8H, 8/14H, 8/27/33H, 12AH, 12H, 14H, 16H, 24H18, 26H, 27AH, 27/26H, 29H, 31H, 33H, 88H, 130H, 131H, 614H, 626H, 2500H

Weight: 4.55 ounces

Bang: 9½" Eartab: 10" Nape: 11"

Top: 6½ - 10" Sides: 10" Back: 10 - 11"

Overall: 17½"

100% hand-knotted stretch cap with monofilament top. Medical application on front hairline and eartabs.





UTOPIA



PERFECTION



SUPRA



Utopia

Ref#: 4509
Color shown: 2500H
Weight: 3.40 ounces
Bang: 4½" Eartab: 8" Nape: 3"
Top: 4½ - 10" Sides: 7¾ - 8¼" Back: 7¾ - 8¼"
Overall: 14"
Petite Average headsize
100% hand-knotted stretch cap with monofilament top
Medical application on front hairline and eartabs



Perfection

Ref#: 4511
Color shown: 131H
Weight: 4.90 ounces
Bang: 5¼" Eartab: 10" Nape: 13¼"
Top: 5 - 10" Sides: 10 - 11½" Back: 10½ - 12½"
Overall: 20"
100% hand-knotted stretch cap with monofilament top
Medical application on front hairline and eartabs



Supra

Ref#: 4505
Color shown: 14H
Weight: 2.85 ounces
Bang: 7½" Eartab: 7½" Nape: 3½"
Top: 7¼ - 7¾" Sides: 5½ - 7½" Back: 3 - 6½"
Overall: 10¾"
100% hand-knotted stretch cap with monofilament top
Medical application on front hairline and eartabs
Also available in colors: 37, 38, 43, 44, 51, 56, 60

COLORS: 1BH, 4H, 5H, 6H, 7H, 8H, 8/14H, 8/27/33H, 12AH, 12H, 14H, 16H, 24H18, 26H, 27AH, 27/26H, 29H, 31H, 33H, 88H, 130H, 131H, 614H, 626H, 2500H

Hair Accents®

Designed for comfort, Hair Accents® beautifully blended hair is permanently attached to a 100% cotton baseball cap creating a ready-to-wear hair fashion alternative with absolutely no styling needed. All Hair Accents styles are available in 12 naturally highlighted colors in both a black and beige colored baseball cap.



Classic Hat Black
Ref#: 8226
Color shown: 12H
Length: 8"



Long Hat Beige
Ref#: 8229
Color shown: 6H
Length: 14"

Classic Hat, Long Hat & Curly Hat are available in colors: 1BH, 4H, 6H, 8H, 12AH, 12H, 14H, 16H, 24H18, 27AH, 30H, 614H



Classic Hat Beige
Ref#: 8228
Color shown: 16H
Length: 8"



Long Hat Black
Ref#: 8227
Color shown: 30H
Length: 14"



Shorty Hat Black
Ref#: 8225
Color shown: 14H
Length: 5½"



Shorty Hat Beige
Ref#: 8230
Color shown: 27AH
Length: 5½"



Curly Hat Black
Ref#: 8249
Color shown: 27AH
Length: 9"



Curly Hat Beige
Ref#: 8251
Color shown: 8H
Length: 9"

Shorty Hat is available in colors: 1BH, 4H, 6H, 8H, 12AH, 12H, 14H, 16H, 24H18, 27AH, 30H, 38, 44, 51, 60, 614H



Cap size adjustment to easily and comfortably fit all head sizes.



Bands & Bangs



Classic Band
Ref#: 2323
Color shown: 130H
Weight: 3.55 ounces
Overall length: 14"
2½ inch permanently attached black headband
Inset shown with 228 Bang

Bang
Ref#: 228 Overall length: 3½ - 4½"

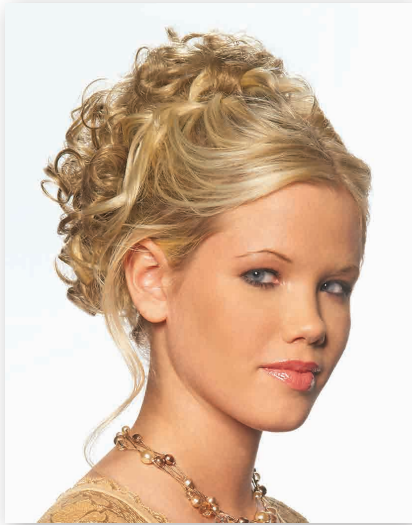


Classic Band & Bang available in colors: 1BH, 4H, 6H, 7H, 8H, 8/27/33H, 12AH, 12H, 14H, 16H, 18/22H, 24H18, 26H, 27AH, 27/26H, 33H, 38, 44, 51, 56, 60, 130H, 131H, 614H, 2500H

Hairpieces



Temptation
Ref#: 8224
Color shown: 88H
Overall length: 24"
Quick Combs® butterfly comb hairpiece



Sassy
Ref#: 8213
Color shown: 26H
Overall length: 8½"
Quick Combs® interlocking comb hairpiece



Charm
Ref#: 8220
Color shown: 88H
Overall length: 7"
Quick Combs® butterfly comb hairpiece



Breezy
Ref#: 8089
Color shown: 12AH
Overall length: 24"
¾ cap hairpiece



Whirlwind
Ref#: 8223
Color shown: 8H
Overall length: 15 - 16"
Quick Combs® butterfly comb hairpiece

All Mane Attraction® hairpieces are available in colors: 1H, 1BH, 4H, 6H, 8H, 12AH, 12H, 14H, 16H, 24H18, 26H, 27AH, 27/26H, 29H, 33H, 88H, 130H, 131H, 614H, 2500H
Sassy & Charm are ALSO available in grey colors: 38, 44, 51, 56, 60

Accessories



Color Ring
Individual fiber swatches aid in choosing the most suitable color for your clients.

Accessory Mannequins
Enhancing the presentation of wigs and hairpieces, Shelby (17") and Alexa (25") have a natural skin tone and soft makeup to accentuate any hair color. Produced in a unique flexible PVC material that will resist scratching and chipping, these accessory heads will keep your display looking amazing for many years to come.



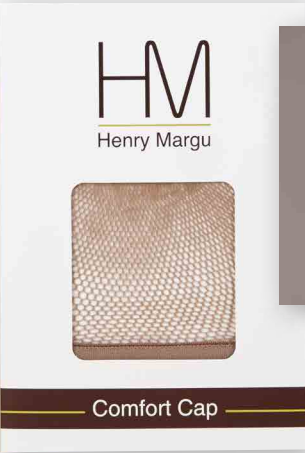
Alexa



Shelby



Wig Care Products
Cleanse, Finish, Revitalize & Shape are specifically formulated to enhance and prolong the life of our exceptional wigs and hairpieces.
Henry Margu wig care products are available in cases of 12 eight ounce bottles.



Comfort Cap
Mesh wig liner designed to keep the wearer cool and comfortable while preventing movement and slipping for a more secure fit.
Available in Black, Beige & Grey and packaged a dozen per color.



Wig Stands
Folding wig stands are ideal for storing and/or drying wigs. Made of sturdy plastic or metal, these convenient stands are easy to assemble and lay flat for traveling ease.

Cap Construction



Traditional
Traditional cap construction features a fine net material in the top area with an open cap in the back. Weftings attached to stretch elastic lace make the open back creating better ventilation to keep the head cooler. A Traditional cap or a wig utilizing components of this type of cap construction is often referred to as a “machine-made” cap.



Open Cap/Featherlight
Open cap is commonly referred to as a “capless” wig due to the lack of net material used in the top as on a Traditional cap and as a result making the wig better ventilated throughout. The entire cap is produced with weftings attached to thin stretch elastic lace. Our exclusive ultra thin weftings used in the Featherlight cap create super lightweight wigs that are exceptionally cool and comfortable to wear.



Lace Front
A lace front wig has a hairline made of a fine lace mesh in which each hair is individually hand knotted. The lace varies in width from ¼ to 1½ inches. The lace typically extends across the entire front hairline but on occasion may extend from ear to ear. The benefit of a lace front wig is an amazingly realistic hairline that appears as if the hair is growing directly out of the scalp and allows the fiber in front to be styled off the face in any direction.

The neutral color of the lace mesh takes on the skin tone of the wearer making the hairline more natural looking and virtually invisible. A Lace Front can be utilized on wigs of any type cap construction.



Hand Knotted
A Hand-Knotted wig is also referred to as a Hand-Tied wig. Hand-Tied wigs are made with a soft stretch lace base and 100% of the fiber is individually hand knotted onto the lace base. This type of cap is lightweight and exceptionally comfortable as the lace feels soft against the head. Hand-Tied wigs are produced with a Mono Top making them extremely natural looking as well and making this type of wig the most luxurious available.



Monofilament Top
Monofilament (Mono) is an extremely sheer mesh used to make a transparent base that creates a realistic looking scalp area and is then hand-knotted with individual fibers to simulate the appearance of natural hair growth. The fiber in a Monofilament Top (Mono Top) allows for multidirectional styling and parting the hair on the left, right or center creating amazing styling versatility and resulting in an extremely natural looking appearance. A Mono Top feels smoother against the scalp than a Traditional or Open Cap and more comfortable as a result. Often a Mono Top will have a polyurethane strip in the front of the mono area to help create a more secure fit.



Monofilament Top with Lace Front
Mono Top with Lace Front wigs are produced the same as a Mono Top wig but utilizing a Lace Front as well to create the most natural front hairline in conjunction with the realistic characteristics of a Mono Top. This allows for amazing off the face styling versatility as well as the flexibility to part hair on the left or right or in the center to achieve multiple styling variations. These wigs offer the most natural and realistic appearance due to the combination of the Mono and Lace Front.



Monofilament Part
A Monofilament Part (Mono Part) cap contains a wide Mono Part area on a machine-made cap and allows the wearer to style a conventional part or a more fashionable zigzag part for the most realistic appearance.



Monofilament Crown
A Monofilament Crown (Mono Crown) cap contains a Mono area in the top area of a machine-made cap. This allows for the fiber in this area to have a more natural and realistic appearance and is often used on shorter wig styles in the crown or in the center area of a style that is flatter and with less volume in the top.

Color Swatches



1BH 4H 5H 626H 31H 6H 7H 8H 8/14H 8/27/33H 12AH 12H



24H18 18/22H 14/24H 14H 16H 26H 614H 2500H 88H 27AH 27/26H 2400H



130H 29H 30H 33H 131H 37 38H 43 44H 51H 56 60H

Gradient colors



4GR 12GR 26GR 614GR 131GR



Amber 20



Amelia 18



Annette 6



Ashley-M/L 57



Athena-M/L 54



Audrey 10



Ava-M/L 55



Bailey 10



Jules-L 29



Kayla 6



Kelly-PA/M 42



Kendall-M/L 52



Leah-P 26



Long Hat 64



Lori-PA/M/L 58



Lucy 18



Becky-M 42



Bethany 24



Bonnie-PA/L 28



Breezy 66



Brenda-P 25



Brooklyn-PA/MP/L 36



Caroline 18



Celine 35



Marnie 4



Monica-PA/M/L 46



Nikki 6



Nora-H/M/L 58



Paige 12



Paulina-L 30



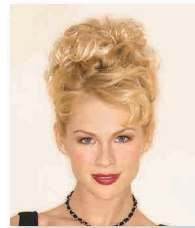
Perfection-H/M 62



Peyton-M/L 49



Charlotte-M/L 46



Charm 66



Chloe 5



Classic Band 66



Classic Hat 64



Curly Hat 65



Danielle 16



Delilah 22



Piper-P 26



Presley-MP/L 37



Quinn-M 42



Rachel-M/L 44



Ruby-PA 26



Sabrina-P/M 40



Sassy 66



Savannah 22



Dylan-L 30



Elena 8



Ella 13



Emily 14



Faith-P 34



Farrah-M/L 53



Felicia 9



Fiona-M/L 50



Scarlet-M/L 48



Shorty Hat 65



Skylar-M/L 56



Stella-M 41



Supra-H/M 62



Temptation 66



Tess 10



Tiffany-L 30



Gabby 17



Gianna-M/L 50



Grace-PA/M/L 50



Harper-L 32



Hayden-M/L 45



Holly 15



Isabelle-L 33



Jayde 21



Trish-PA/M/L 58



Utopia-PA/H/M 62



Vanity 22



Violet-H/M/L 60



Visage-H/M 61



Whirlwind 66



Zoey-M/L 46

H - Hand-knotted
L - Lace Front
M - Monofilament top
MP - Monofilament part
P - Petite headsize
PA - Petite Average headsize

